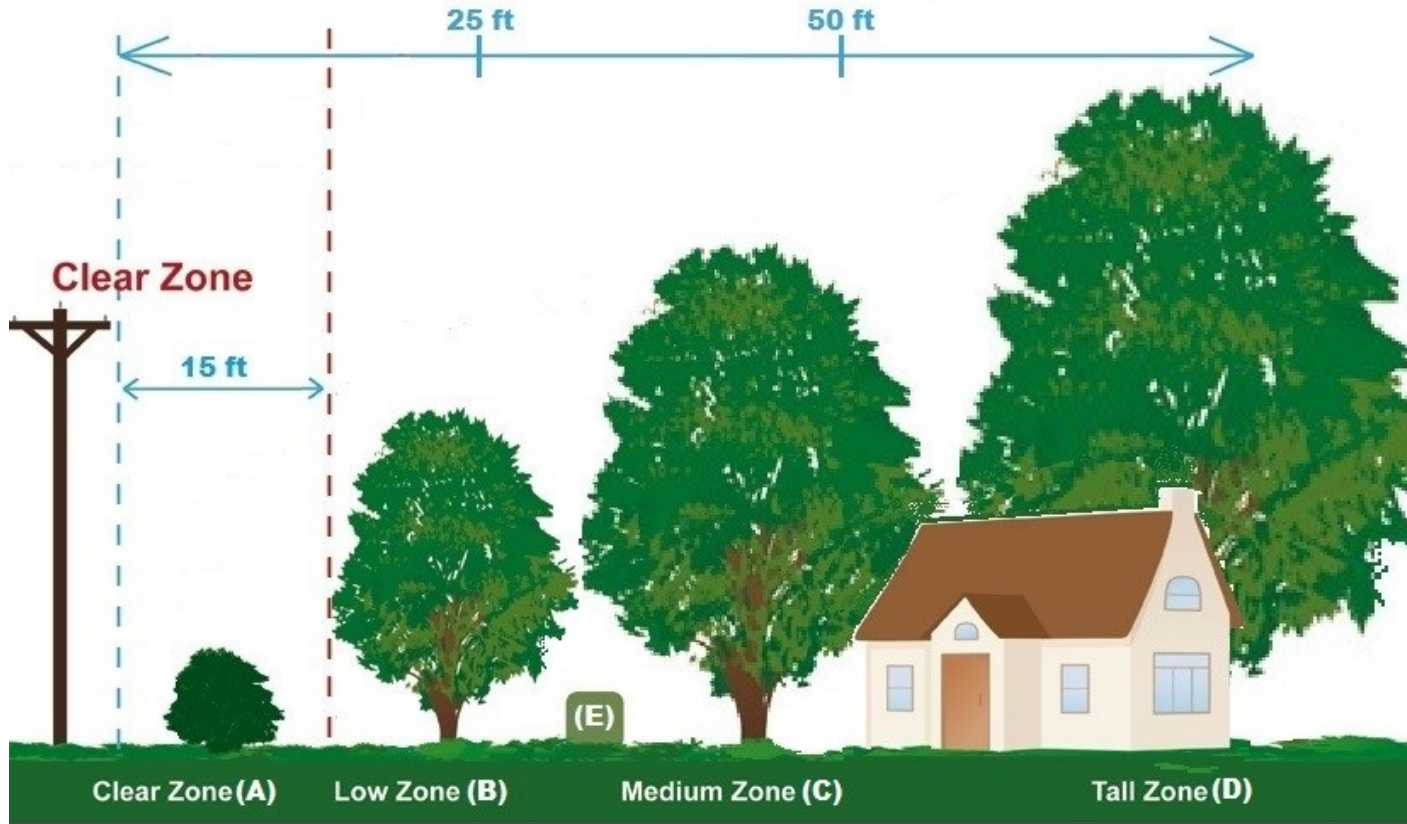




Southwest Tennessee Electric Membership Corporation

A Touchstone Energy® Cooperative 

Planting the Right Tree in the Right Place



- (A) Clear Zone - Shrubs and dwarf variety trees with mature height of 12-15 ft**
- (B) Low Zone - Trees with mature height of 25 ft or less: Redbud, Dogwood, Crabapple**
- (C) Medium Zone - Trees with mature height of 40 ft or less: Sassafras, Cedar, Flowering Pear**
- (D) Tall Zone - Trees with mature height of 40 ft or greater: Maple, Oak, Pine**
- (E) Trees and shrubs planted 10ft away from meters and ground mounted transformers**

No matter which zone you're planting in, be sure that the tree and its branches will not reach into the Clear Zone when fully grown. A minimum of 15 feet clearance should be left between a power line and any branches.

